

Panasonic

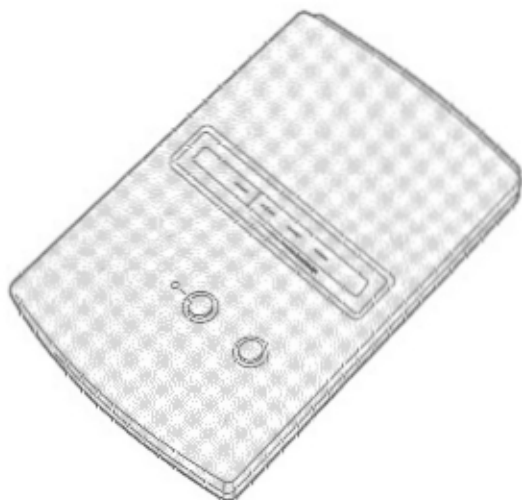
PC/FAX Store 40

PC/FAX Store 80

KX-FB40

Model No. **KX-FB80**

Operating Instructions



Please read these instructions completely before operating this unit.
Store this manual for future reference.

Preparation

Operation

Useful Information

Contents

Preparation

Accessories	4
Part names	4
Connection	5
Connection examples	6

Preparation

Operation

Receiving faxes into memory	8
Recording voice messages and receiving faxes	9
Remote fax receiving using an extension phone	10
Changing the number of rings	11
Sending faxes to your PC	12

Operation

Useful Information

Important safety instructions	15
FCC information	17
Specifications	19
Panasonic Warranty Policy	Back cover

Useful Information

Features

- Receives and stores faxes while your PC is turned off.
- Provides full fax security.
- Receives faxes while traveling, away from your desk or even asleep.
- Single line voice/fax automatic detection (Telephone answering machine is required)
- Transfers faxes from your PC/FAX Store to your PC for viewing, forwarding or printing.

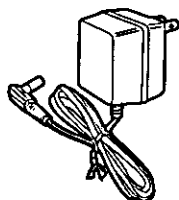
Accessories

Telephone Line Cord 1 pc.

AC Adaptor 1 pc.



PQJA59V



KX-A11

Part names

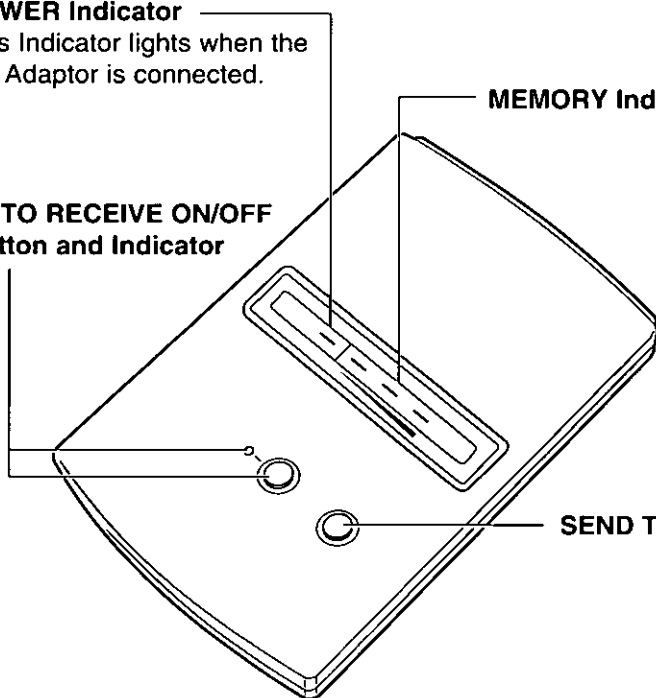
POWER Indicator

This Indicator lights when the AC Adaptor is connected.

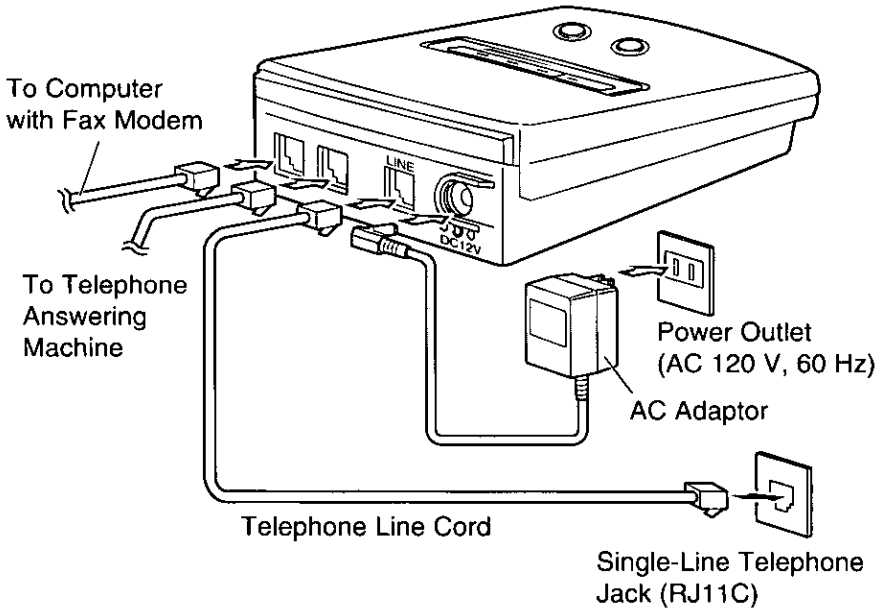
MEMORY Indicator

AUTO RECEIVE ON/OFF Button and Indicator

SEND TO PC Button



Connection



- Use only Panasonic AC adaptor KX-A11.
- Your computer requires a fax modem and fax application software.

Setting the number of rings

- The number of rings on the PC/FAX Store is preset to 4. To change the number of rings, see page 11.
- When you connect a telephone answering machine, **the rings on the answering machine must be set lower than that of the PC/FAX Store.** This will give the answering machine an opportunity to answer the line first. Refer to the table to set up the answering machine.

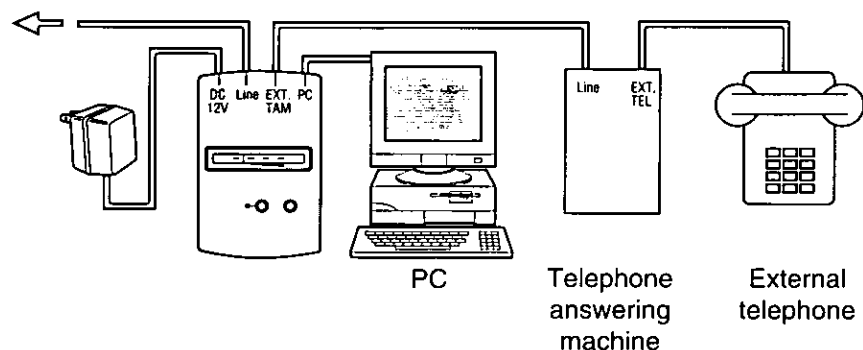
PC/FAX Store	Telephone answering machine	Note
4 rings (Default)	Set to 3 rings	Recommended setting
5 rings	Set to 4 rings	Use this setting when the rings on the answering machine cannot be set to 3, 2 or 1.

Connection examples

The following examples will help you when setting up the PC/FAX Store with other devices.

Example 1—PC/FAX Store, PC and telephone answering machine

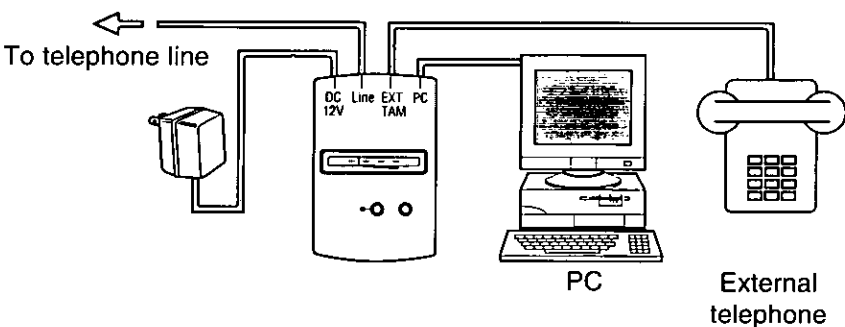
To telephone line



- Receives both voice messages and faxes.
- Sends saved faxes to your PC.
- Allows you to make/answer calls using the external telephone.

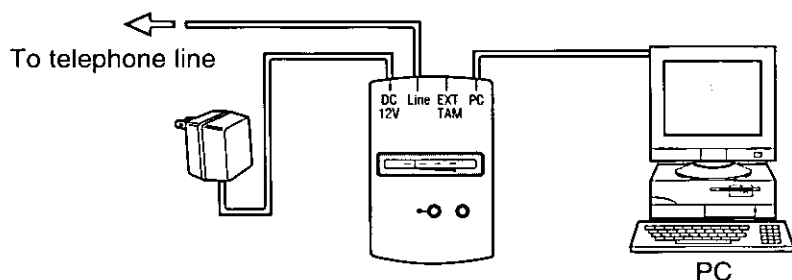
Example 2—PC/FAX Store, PC and telephone

To telephone line



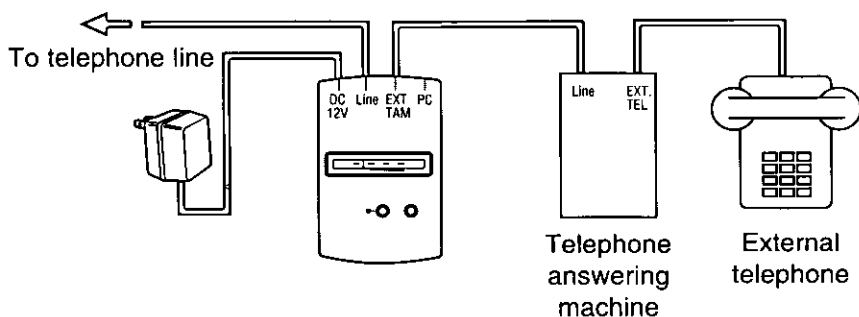
- Receives faxes.
- Sends saved faxes to your PC.
- Allows you to make/answer calls using the external telephone.

Example 3—PC/FAX Store and PC



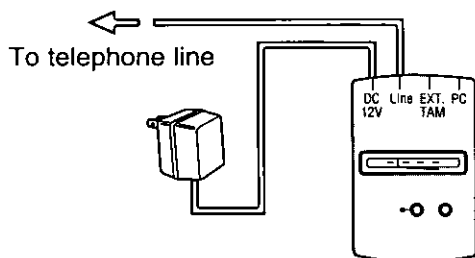
- Receives faxes.
- Sends saved faxes to your PC.

Example 4—PC/FAX Store and telephone answering machine



- Receives voice messages and faxes without a PC.
- Allows you to make/answer calls using the external telephone.

Example 5—PC/FAX Store only

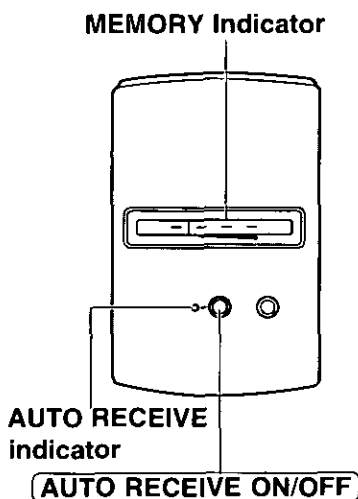


- Receives faxes without a PC.

Receiving faxes into memory

The following procedure allows your unit to receive faxes while your PC is turned off.

- 1 Press **AUTO RECEIVE ON/OFF**.
 - oThe indicator lights.
- 2 When a call is received, the unit will answer after 4 rings* and receive faxes into memory.
 - oThe AUTO RECEIVE indicator light will flash as it receives data.
 - oAfter reception has been completed, the MEMORY indicator will flash, indicating the number of faxes being stored. (If 10 or more messages are received, the indicator will stay lit.)
 - oTo view faxes or print them, follow "Sending faxes to your PC" on page 12.



*Default setting. See "Changing the number of rings" (page 11) to change this setting.

Checking memory being used

As memory is used, the MEMORY indicator lights will increase and when memory becomes full, the red indicator lights.

- oConcerning the memory capacity, see page 19.
- oThe data in memory will not be erased even if the AC adaptor is removed.

Turning AUTO RECEIVE on from a remote location

1. Call your unit and wait for 20 rings.
 - oThe unit is turned on and ready to receive fax documents.
 - oWhen a telephone answering machine or voice mail are in use, this feature is not active.

When you wish incoming faxes to be received directly to your PC, set AUTO RECEIVE on the PC/FAX Store to **off**, then follow your fax software application's instructions.

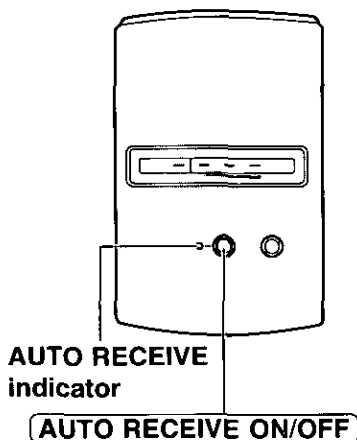
Recording voice messages and receiving faxes

If a telephone answering machine is connected to the unit, both voice messages and fax documents can be received.

1 Turn on the telephone answering machine. (Not included)

2 Press **AUTO RECEIVE ON/OFF** on the PC/FAX Store to light the indicator.

- When a voice call is received, the telephone answering machine will record the voice message.
- When a fax call is received, the PC/FAX Store will activate and store fax calls into memory.
- To listen to the recorded messages, follow the operating instructions of your telephone answering machine.



Note:

- The number of rings on the answering machine must be set lower than that of the PC/FAX Store (see page 5).

Receiving faxes into memory while AUTO RECEIVE is off

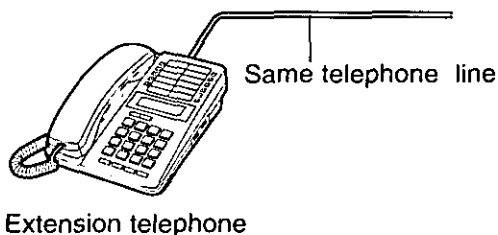
When you pick up the handset of the external telephone, if the call is a fax, press **AUTO RECEIVE ON/OFF**.

Receiving faxes into memory while running FAX application software on the PC

- Press **AUTO RECEIVE ON/OFF** on the PC/FAX Store to light the indicator.
- Set the auto receive mode on your FAX application software to off (Follow the operating instructions of your FAX application software).

Remote fax receiving using an extension phone _____

If you connect an extension telephone on the same line to which your unit is connected, you can make and answer voice calls or receive a fax call by using the extension telephone.



If you receive a voice call with the extension telephone:

- 1 Lift the handset and talk.
- 2 Replace the handset.

If you receive a fax call with the extension telephone:

- 1 Lift the handset.
(a slow beep is heard or no sound is heard.)
- 2 Press within 30 seconds after lifting the handset.
- 3 Hang up the handset.
- 4 The PC/FAX Store automatically starts receiving the document.

Note:

- If the extension telephones are connected to the same line, do not use the extension telephones during fax reception. Otherwise image quality will be affected.

Changing the number of rings _____

1 Press **AUTO RECEIVE ON/OFF** and **SEND TO PC** at the same time.

oThe power and memory indicator light will be on, indicating the current setting of rings.

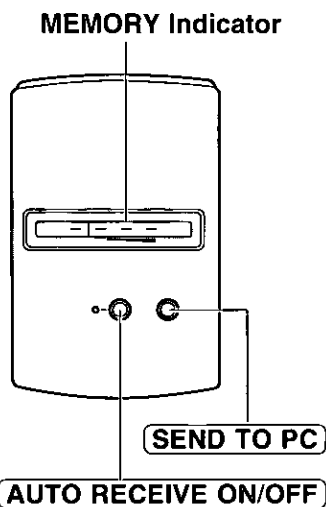
☼ - - ☼ one (1) ring

- ☼ - ☼ four (4) rings
(Default setting)

- - ☼ ☼ five (5) rings

2 Press **AUTO RECEIVE ON/OFF** repeatedly until the indicator light moves to the desired setting.

3 Press **SEND TO PC** to store the setting.



Note:

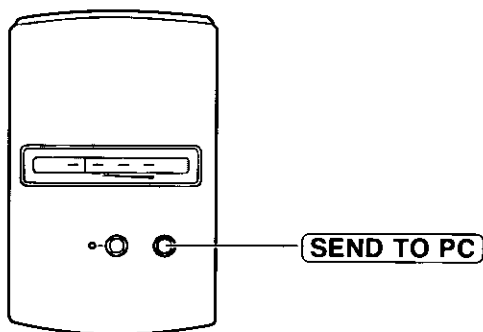
oWhen connected to a telephone answering machine, the number of rings on the PC/FAX Store must be set higher than that of the telephone answering machine (see page 5).

oThe number of rings can only be changed when there are no faxes stored in memory.

Sending faxes to your PC _____

To send stored faxes from the PC/FAX Store to your PC, follow these steps.

- 1 Turn on your PC and activate your fax modem.
- 2 Manually receive documents using your fax software application. The following are examples of how to use the PC/FAX Store with two popular FAX software applications. If other fax software applications are used, follow the instructions for those applications.
 - If you are using Delrina WinFax LITE with Windows 3.1, follow steps on page 13.
 - If you are using Microsoft Exchange With Windows 95, follow steps on page 14.
- 3 Press **SEND TO PC** on the PC/FAX Store.



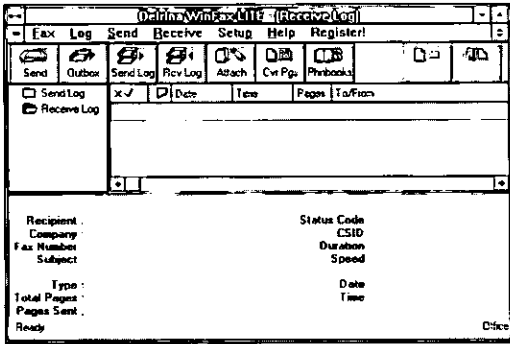
Note:

- After all faxes have been received by your PC, the memory will be cleared.
- To stop sending faxes to your PC, stop receiving at the PC side or remove the AC adaptor. All data in this unit is retained. When you send again, the data is sent from the beginning.
- A Journal report will be sent to your PC with each incoming faxes. Your PC will show the pages including the Journal report.

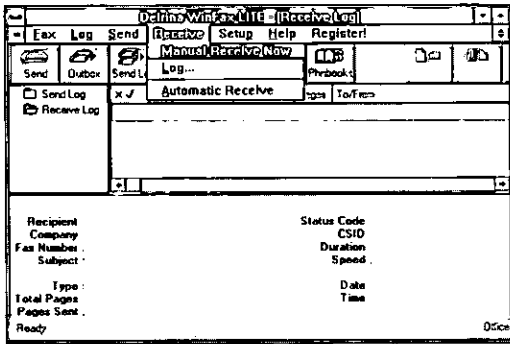
Fax modem and PC fax software with manual reception capabilities are required.

Using Delrina WinFax LITE (ver. 4.0) with Windows 3.1

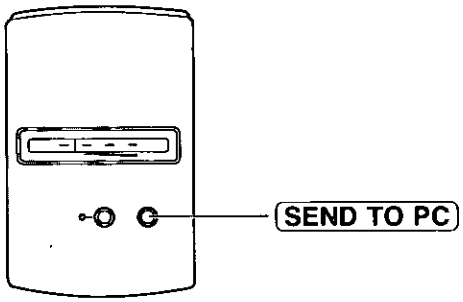
1 Turn on your PC and activate the WinFax LITE software application.



2 Click **Receive** in the WinFax LITE dialog box and click **Manual Receive Now**.



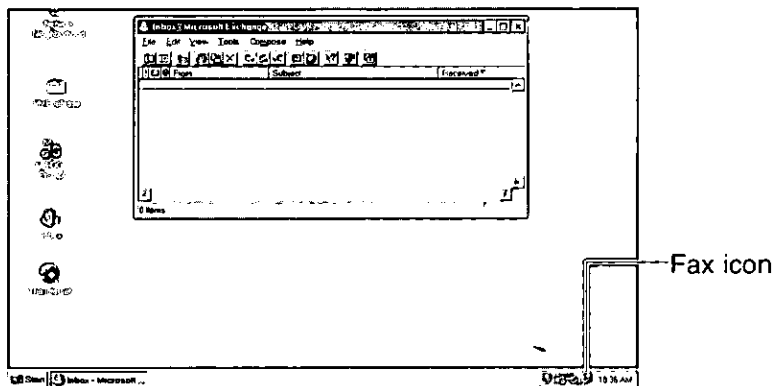
3 Press **SEND TO PC** on the PC/FAX Store.



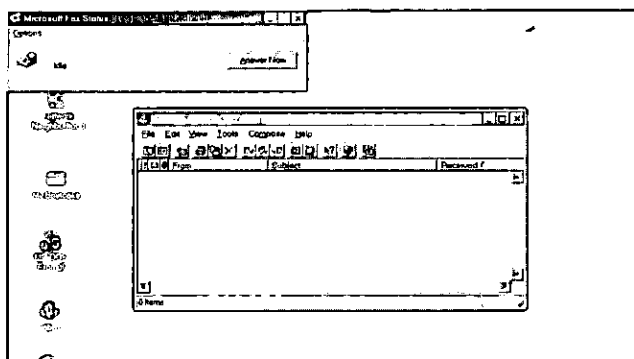
Operation

Using Microsoft Exchange with Windows 95

- 1 Turn on your PC and activate the Microsoft Exchange software application

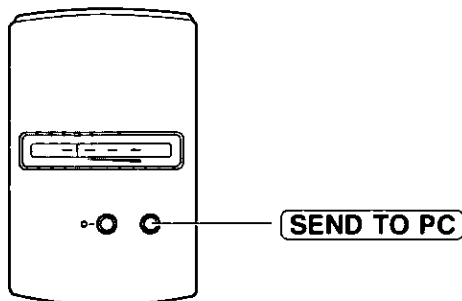


- 2 Click fax icon in the task bar.



- 3 Click **Answer Now** on the Microsoft Fax Status dialog box.

- 4 Press **SEND TO PC** on the PC/FAX Store.



Important safety instructions

When using this unit, basic safety precautions should always be followed to reduce the risk of fire, electric shock, or personal injury.

1. Read and understand all instructions.
2. Follow all warnings and instructions marked on this unit.
3. Unplug this unit from AC outlets before cleaning. Do not use liquid or aerosol cleaners. Use a damp cloth for cleaning.
4. Do not use this unit near water, for example, near a bath tub, wash bowl, kitchen sink, or the like.
5. Place this unit securely on a stable surface. Serious damage and/or injury may result if the unit falls.
6. Use only the power source marked on the unit. If you are not sure of the type of power supplied to your home, consult your local power company.
7. Do not place objects on the power cord. Install the unit where no one can step or trip on the cord.
8. Do not overload wall outlets and extension cords. This can result in the risk of fire or electric shock.
9. Never push any objects through slots in this unit. This may result in the risk of fire or electric shock. Never spill any liquid on the unit.
10. To reduce the risk of electric shock, do not disassemble this unit. When service is required, contact Panasonic Service. Opening or removing covers may expose you to dangerous voltages or other risks. Incorrect reassembly can cause electric shock when the unit is subsequently used.
11. Unplug this unit from the wall outlet and contact Panasonic Service when the following conditions occur:
 - A. When the power supply cord or plug is damaged or frayed.
 - B. If liquid has been spilled into the unit.
 - C. If the unit has been exposed to rain or water.
 - D. If the unit does not work normally by following the operating instructions. Adjust only controls covered by the operating instructions. Improper adjustment may require extensive repair.
 - E. If the unit has been dropped or physically damaged.
 - F. If the unit exhibits a distinct change in performance.
12. During thunderstorms, avoid using telephones except cordless types. There may be a remote risk of an electric shock from lightning.

SAVE THESE INSTRUCTIONS

INSTALLATION:

1. Never install telephone wiring during a lightning storm.
2. Never install telephone jacks in wet locations unless the jack is specifically designed for wet locations.
3. Never touch uninsulated telephone wires or terminals unless the telephone line has been disconnected at the network interface.
4. Use caution when installing or modifying telephone lines.

WARNING:

To prevent the risk of fire or electrical shock, do not expose this product to rain or any type of moisture.

OTHER INFORMATION

- Keep the unit away from electrical noise-generating devices, such as fluorescent lamps and motors.
- The unit should be kept free from dust, high temperature, and vibration.
- The unit should not be exposed to direct sunlight.
- Do not place heavy objects on top of this unit.
- Do not touch the plug with wet hands.

FCC information

If required by the telephone company, inform them of the following.

- FCC Registration No.:
(found on the bottom of the unit)
- Ringer Equivalence No.:
(found on the bottom of the unit)
- The particular telephone line to which the equipment is connected.

This unit must not be connected to a coin operated line. If you are on a party line, check with your local telephone company.

Ringer Equivalence Number (REN):

This REN is useful in determining the quantity of devices you may connect to your telephone line and still have all of those devices ring when your telephone number is called. In most but not all areas, the sum of the REN's of all devices connected to one line should not exceed five (5.0). To be certain of the number of devices you may connect to your line, as determined by the REN, you should contact your local telephone company to determine the maximum REN for your calling area.

In the event that terminal equipment causes harm to the telephone network, the telephone

company should notify the customer, if possible, that service may be stopped. However, where prior notice is impractical, the company may temporarily cease service providing that they:

- a) Promptly notify the customer.
- b) Give the customer an opportunity to correct the problem with their equipment.
- c) Inform the customer of the right to bring a complaint to the Federal Communication Commission pursuant to procedures set out in FCC Rules and Regulations Subpart E of Part 68.

The Telephone Company may make changes in its communications facilities, equipment operations, or procedures where such action is reasonably required in the operation of its business and is not inconsistent with the rules and regulations in FCC Part 68. If such changes can be reasonably expected to render any customer terminal equipment incompatible with telephone company communications facilities, or require modification or alteration of such terminal equipment, or otherwise materially affect its use or performance, the customer shall be given adequate notice in writing, to allow the customer an opportunity to maintain uninterrupted service.

CAUTION:

Any changes or modifications not expressly approved by the party responsible for compliance could void the user's authority to operate this device.

NOTE:

This equipment has been tested and found to comply with the limits for a Class B digital device, pursuant to Part 15 of the FCC Rules. These limits are designed to provide reasonable protection against harmful interference in a residential installation. This equipment generates, uses, and can radiate radio frequency energy and, if not installed and used in accordance with the instructions, may cause harmful interference to radio communications. However, there

is no guarantee that interference will not occur in a particular installation. If this equipment does cause harmful interference to radio or television reception, which can be determined by turning the equipment off and on, the user is encouraged to try to correct the interference by one or more of the following measures:

- Reorient or relocate the receiving antenna.
- Increase the separation between the equipment and receiver.
- Connect the equipment into an outlet on a circuit different from that to which the receiver is connected.
- Consult the dealer or an experienced radio/TV technician for help.

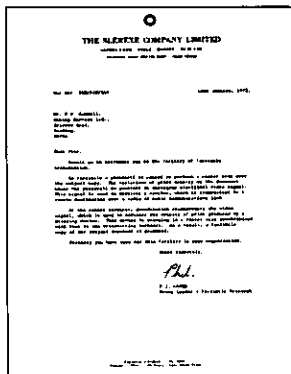
Specifications

- Memory Capacity:** KX-FB40: Approx. 40 page of faxes*
KX-FB80: Approx. 80 page of faxes**
- Modem Speed:** 9600/7200/4800/2400 bps; Automatic Fallback
- Operating Environment:** 5 °C–35 °C (41 °F–95 °F), 20–80 % RH
- Dimensions (W×D×H):** 93×147×40 mm (3²/₃₂"×5¹³/₁₆"×1⁹/₁₆"
- Power Source:** Refer to the name plate on the bottom of the unit.
- Power Consumption:** Reception: Approx. 6 W
Standby: Approx. 4 W
- Mass (weight):** Approx. 230 g (0.5 lbs.)

*512 KB memory. Actual number of pages depends upon the contents of the pages and the resolution. 40 page capacity based upon ITU-T (CCITT) Image No. 1 in standard resolution.

**1 MB memory. Actual number of pages depends upon the contents of the pages and the resolution. 80 page capacity based upon ITU-T (CCITT) Image No. 1 in standard resolution.

ITU-T (CCITT) Image No. 1



Useful Information

Note:

- Any details given in these instructions are subject to change without notice.
- The picture and illustrations in these instructions may vary slightly from the actual product.

Panasonic Warranty Policy _____

Panasonic Computer Peripheral Company ("PCPC") will repair or exchange your unit with a new or comparable rebuilt, reconditioned or reclaimed unit in exchange for the defective unit, free of charge, in the U.S.A. for (1) year from the date of original purchase in the event of a defect in materials or workmanship.

Panasonic Computer Peripheral Company
Division of Panasonic Communications & Systems Company
A Unit of Matsushita Electric Corporation of America
Two Panasonic Way, Secaucus, New Jersey 07094

Panasonic Sales Company
Division of Matsushita Electric of Puerto Rico, Inc.
San Gabriel Industrial Park, 65th Infantry Avenue KM. 9.5
Carolina, Puerto Rico 00630

Matsushita Electric Industrial Co., Ltd.
Central P.O. Box 288, Osaka 530-91, Japan
